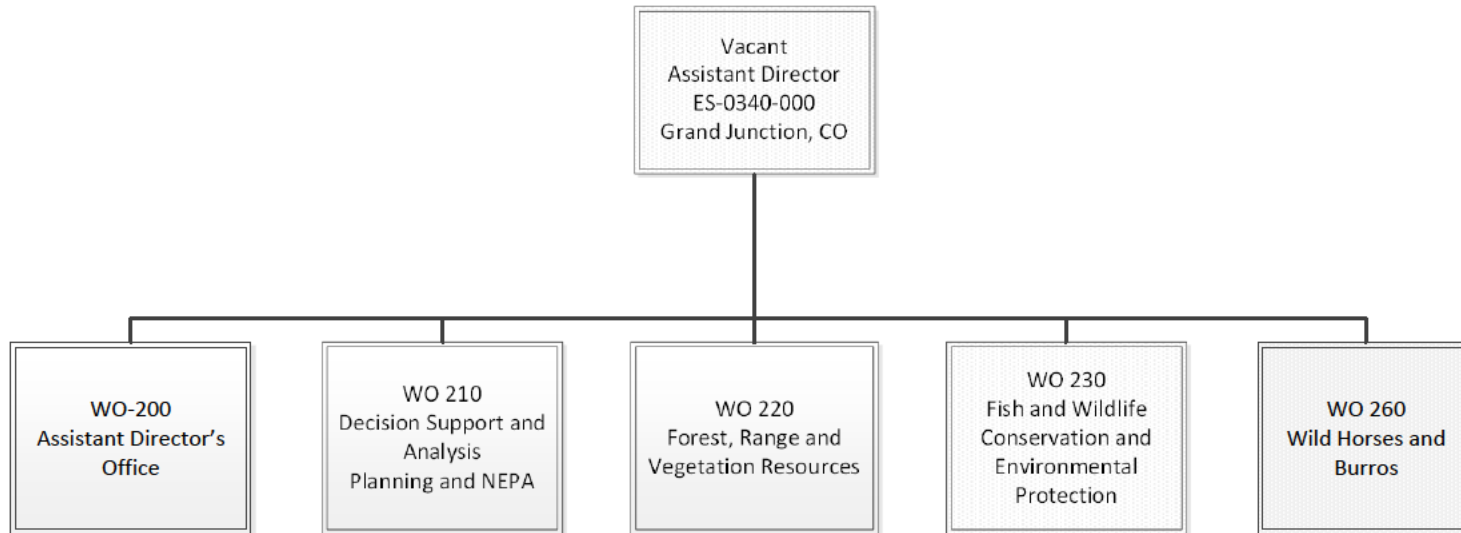


# Proposed Table of Organization

## WO-200: Directorate of Resources and Planning



State/Center/Assistant Director \_\_\_\_\_

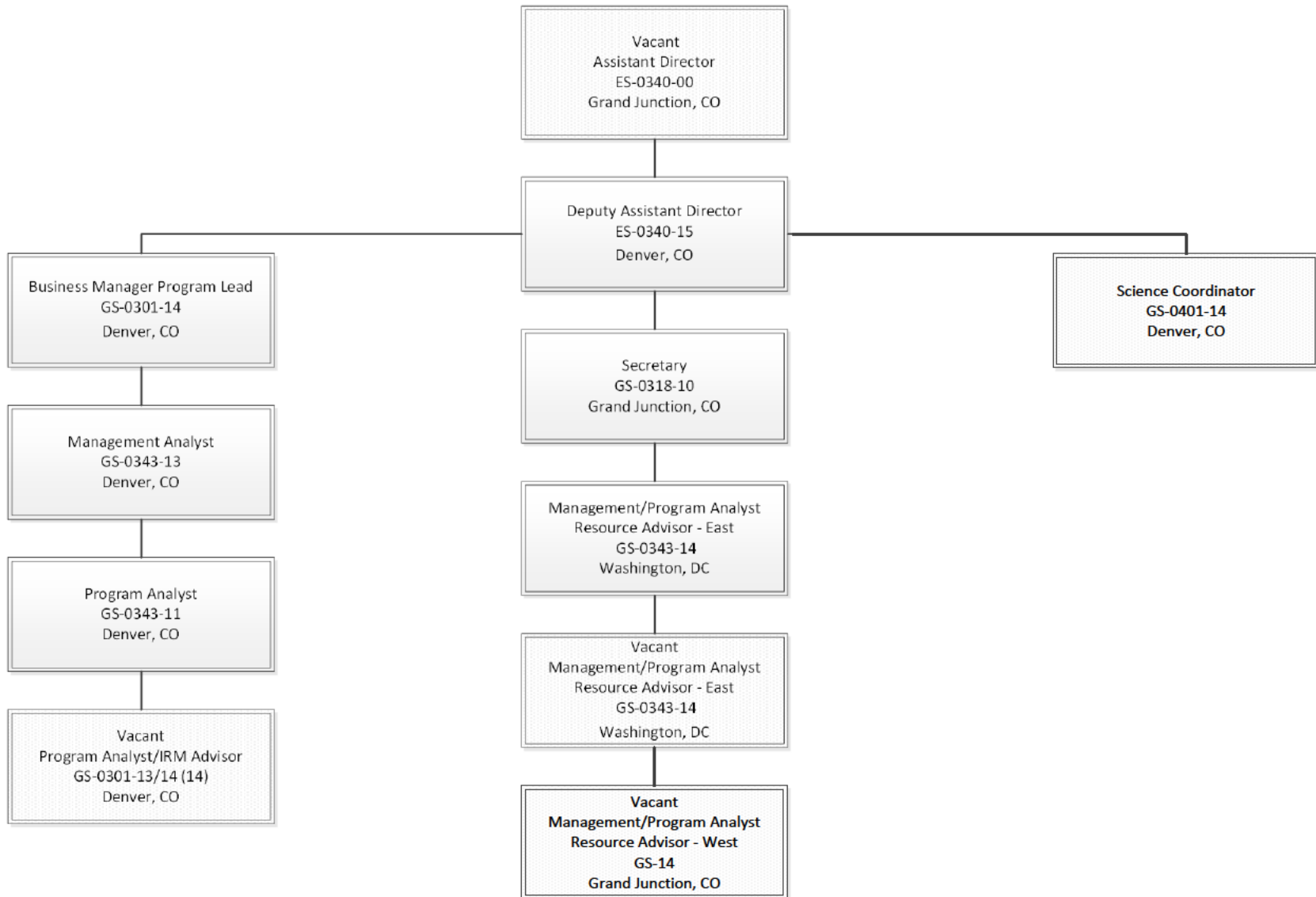
Signature

Concur       Do Not Concur

Deputy Director, Operations \_\_\_\_\_

Signature

# WO-200 Directorate of Resources and Planning



State/Center/Assistant Director \_\_\_\_\_

Signature

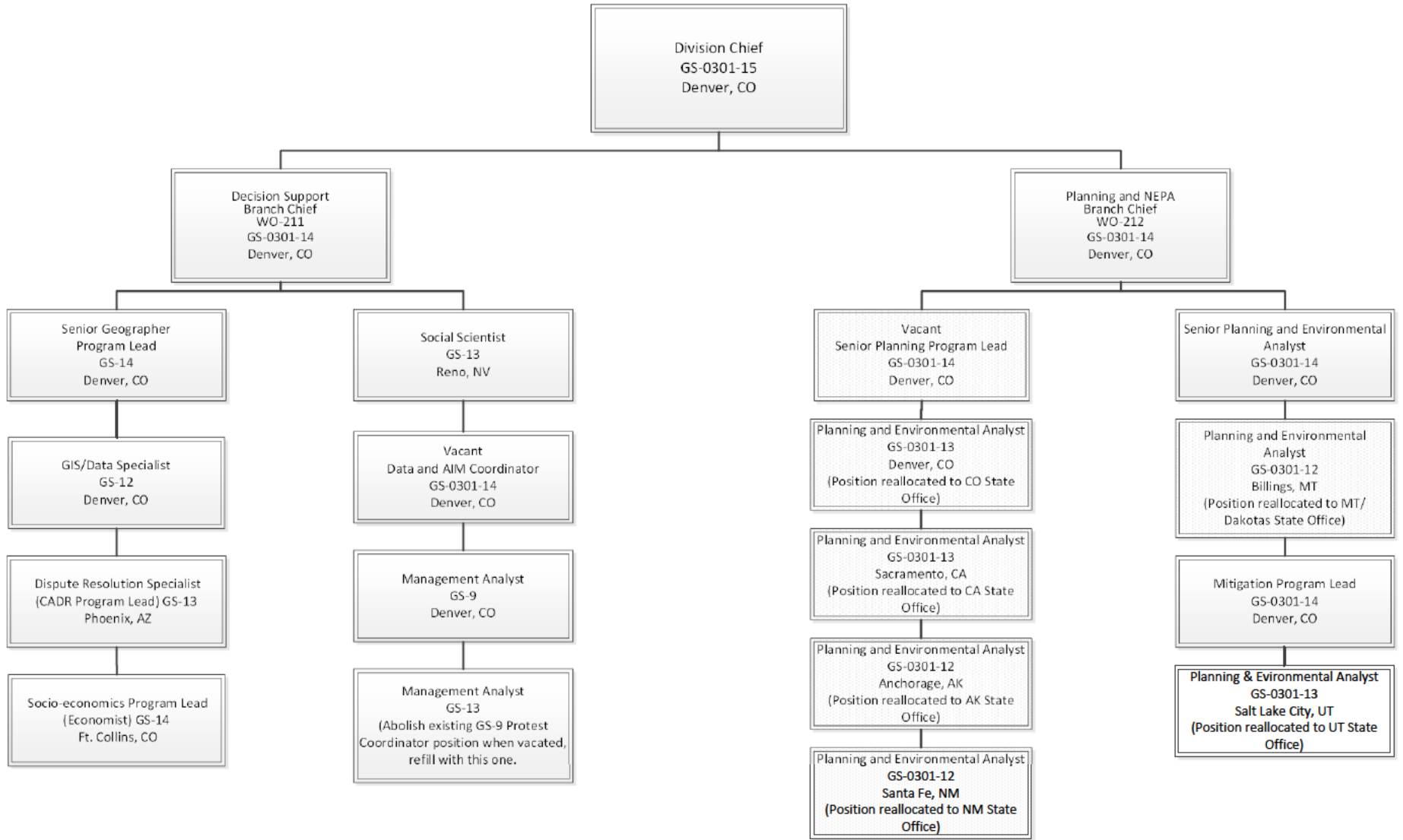
\_\_\_ Concur      \_\_\_ Do Not Concur

Deputy Director, Operations \_\_\_\_\_

Signature

# WO-210

## Division of Decision Support and Analysis, Planning and NEPA



State/Center/Assistant Director \_\_\_\_\_

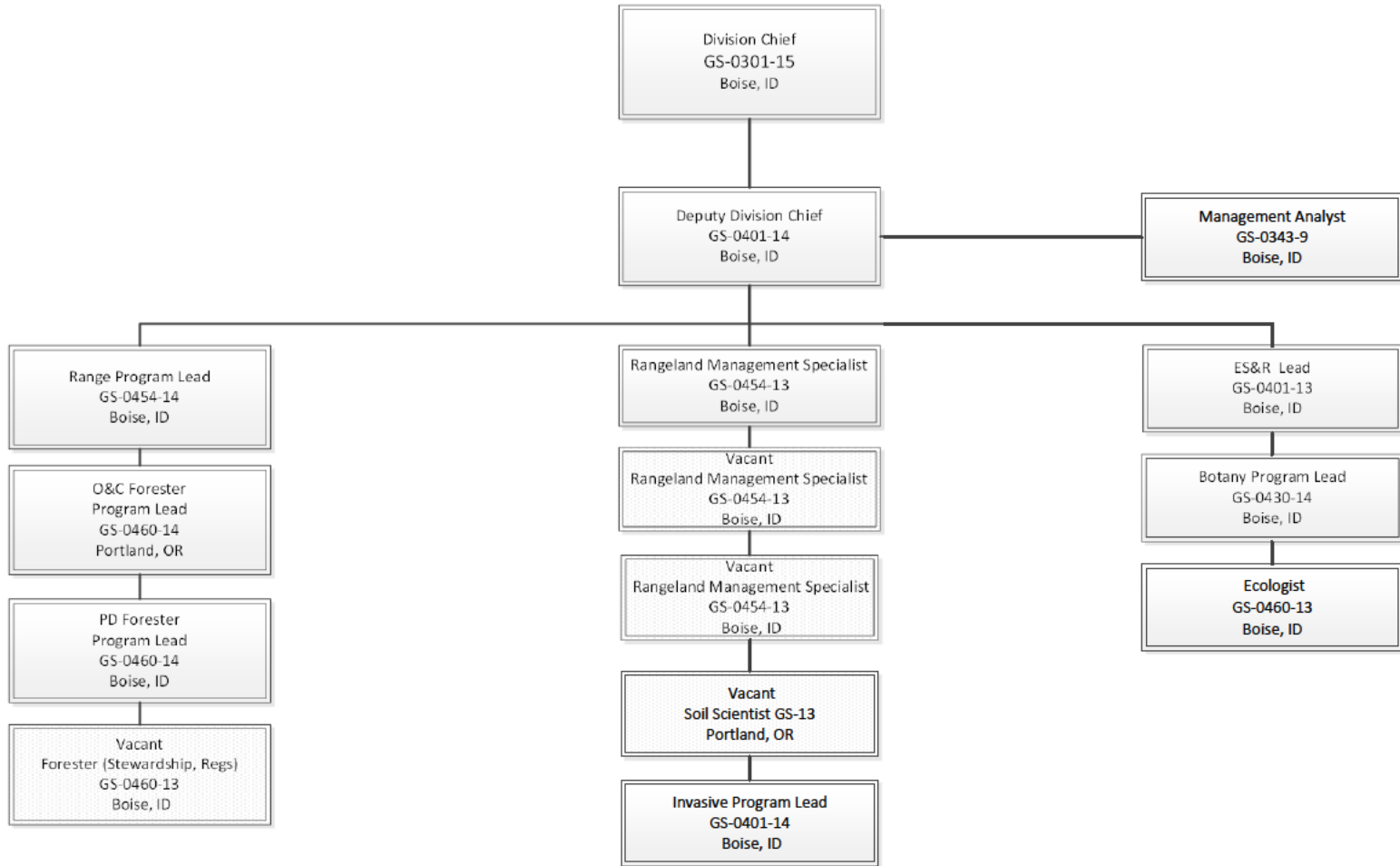
Signature

\_\_\_ Concur      \_\_\_ Do Not Concur

Deputy Director, Operations \_\_\_\_\_

Signature

# WO-220 Division of Forest, Range and Vegetation Resources



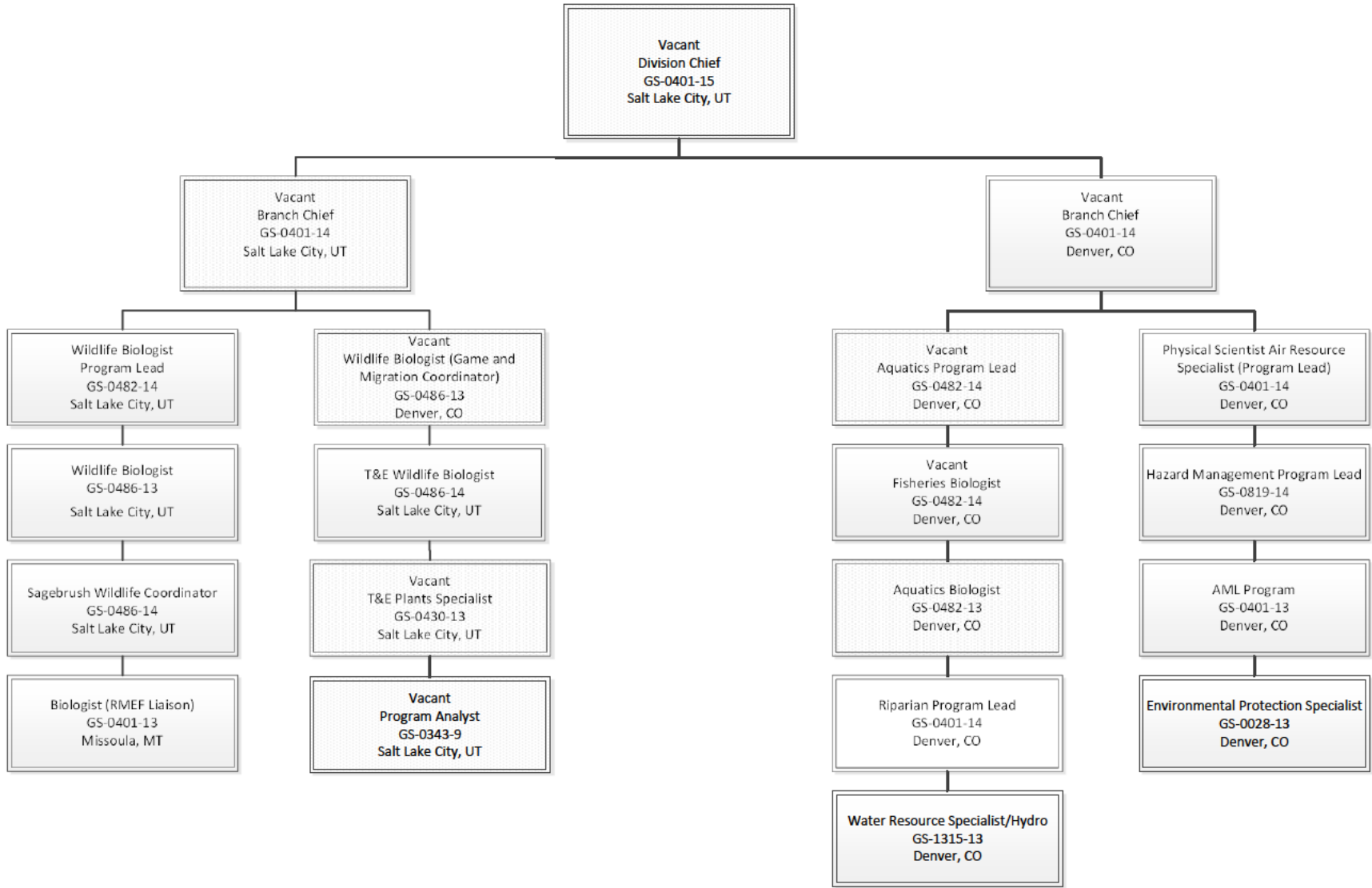
State/Center/Assistant Director \_\_\_\_\_ Signature

Concur  Do Not Concur

Deputy Director, Operations \_\_\_\_\_

Signature

# WO-230 Fish and Wildlife Conservation and Environmental Protection



State/Center/Assistant Director \_\_\_\_\_

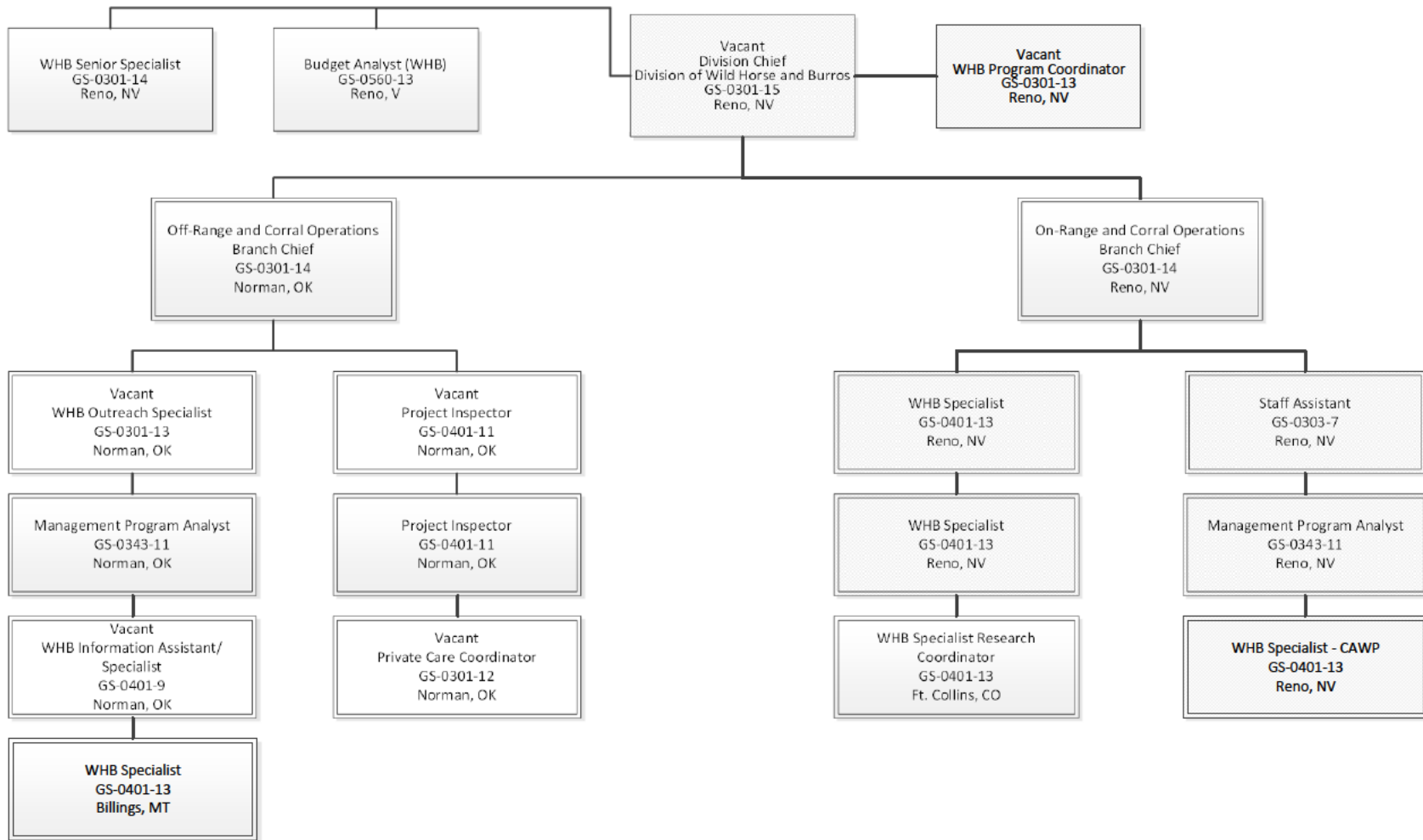
Signature

\_\_\_ Concur      \_\_\_ Do Not Concur

Deputy Director, Operations \_\_\_\_\_

Signature

# WO-260 Table of Organization Chart



State/Center/Assistant Director \_\_\_\_\_ Signature

Concur  Do Not Concur

Deputy Director, Operations \_\_\_\_\_

Signature